

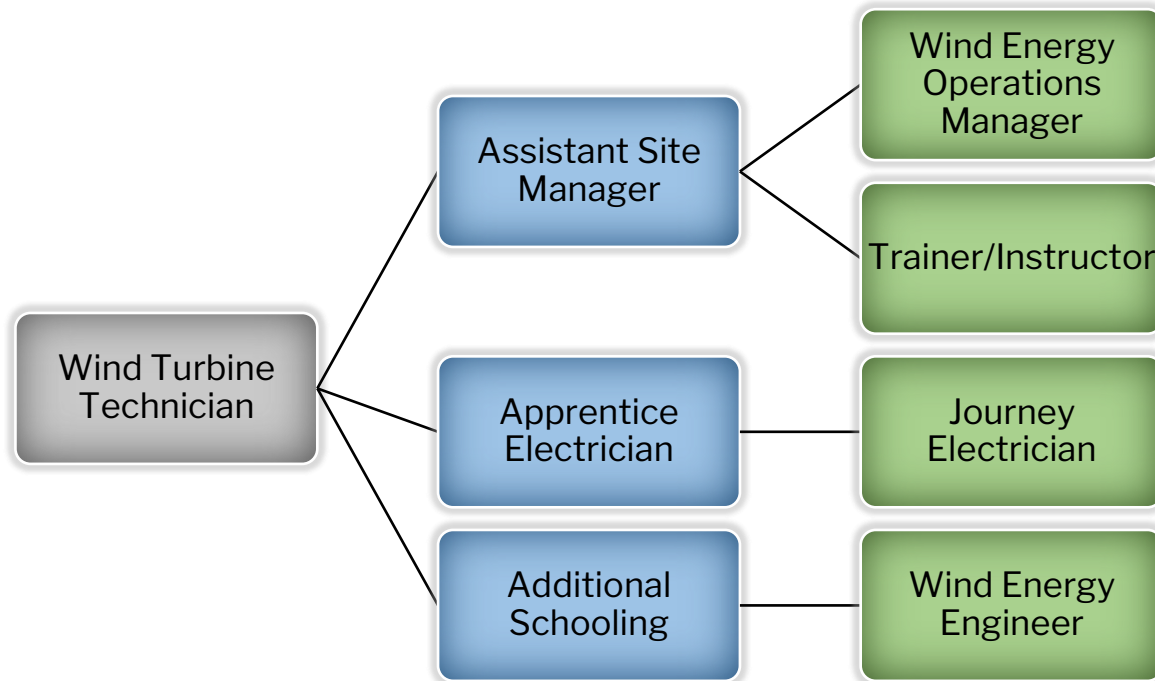
Wind Turbine Technician

Also known as: Field Service Technician, Renewable Energy Technician, Wind Farm Support Specialist, Wind Technician, Wind Turbine Operator

Wind Turbine Technicians are primarily responsible for the maintenance of operating wind turbines. They inspect, adjust, or repair wind turbines and perform maintenance of equipment including any electrical, mechanical, or hydraulic malfunctions. Much of their work is done inside the nacelle, which contains the generator, gearbox, and brakes for the blades. At times, they may be required to work on the blades and must rappel from the nacelle to the section of blade that needs servicing.

Pay Scale	Education	Projected Opportunities
\$62,860 in 2021 in WA \$56,260 in 2021 in U.S.	High School Diploma, Certificate, Associate's	60 through 2028 in WA 1,400 through 2030 in U.S.

Career Path



(The career path for a wind turbine technician has many branches and options. As an entry-level type position, they can enter the workforce with a high school diploma or obtain a certification/associate degree. They can move up into jobs such as assistant site manager or apprentice electrician, to advance their careers to positions such as wind energy operations manager, trainer/instructor, or journey electrician. They can also obtain additional schooling and pursue a career as a wind energy engineer.)

Training & Requirements

Training	Required Skills	Responsibilities
<p>Wind Techs often have certifications, an associate's degree, or work experience with mechanical and electrical systems. When they are hired, they go on to complete extensive on-the-job training and can continue to collect certifications and advance their career. Wind techs can go on to be site managers, electrician apprentices, or continue their schooling and pursue engineering.</p>	<ul style="list-style-type: none"> • Knowledge of mechanical, electrical, and hydraulic systems • Ability to troubleshoot and repair systems • Willing to work at height, outdoors, and with safety equipment to rappel • Problem-solving to diagnose and repair equipment • Familiarity with industrial control software, email programs, and Microsoft Office 	<ul style="list-style-type: none"> • Troubleshoot and repair a variety of systems including: mechanical, electrical, and hydraulic systems • Test wind turbine generator systems to ensure proper operations • Perform routine maintenance on wind turbine equipment, underground transmission systems, and wind field substations

Additional Information:	Related Careers:
<ul style="list-style-type: none"> • O*NET Occupational Data • U.S. Bureau of Labor Statistics • College Programs • Apprenticeships • Printable PDF 	<ul style="list-style-type: none"> • Electronic Engineering Technician • Nuclear Technician • Renewable Energy Technician • Solar Photovoltaic Technician