

Justin Yim
CoE Program Coordinator

A SHORT INTRODUCTION

Education

- Humboldt State University
- B.S. in Environmental Science,
with a focus in Energy &
Climate
- Spent 4 years Undergrad



Pictured above : Center of Campus

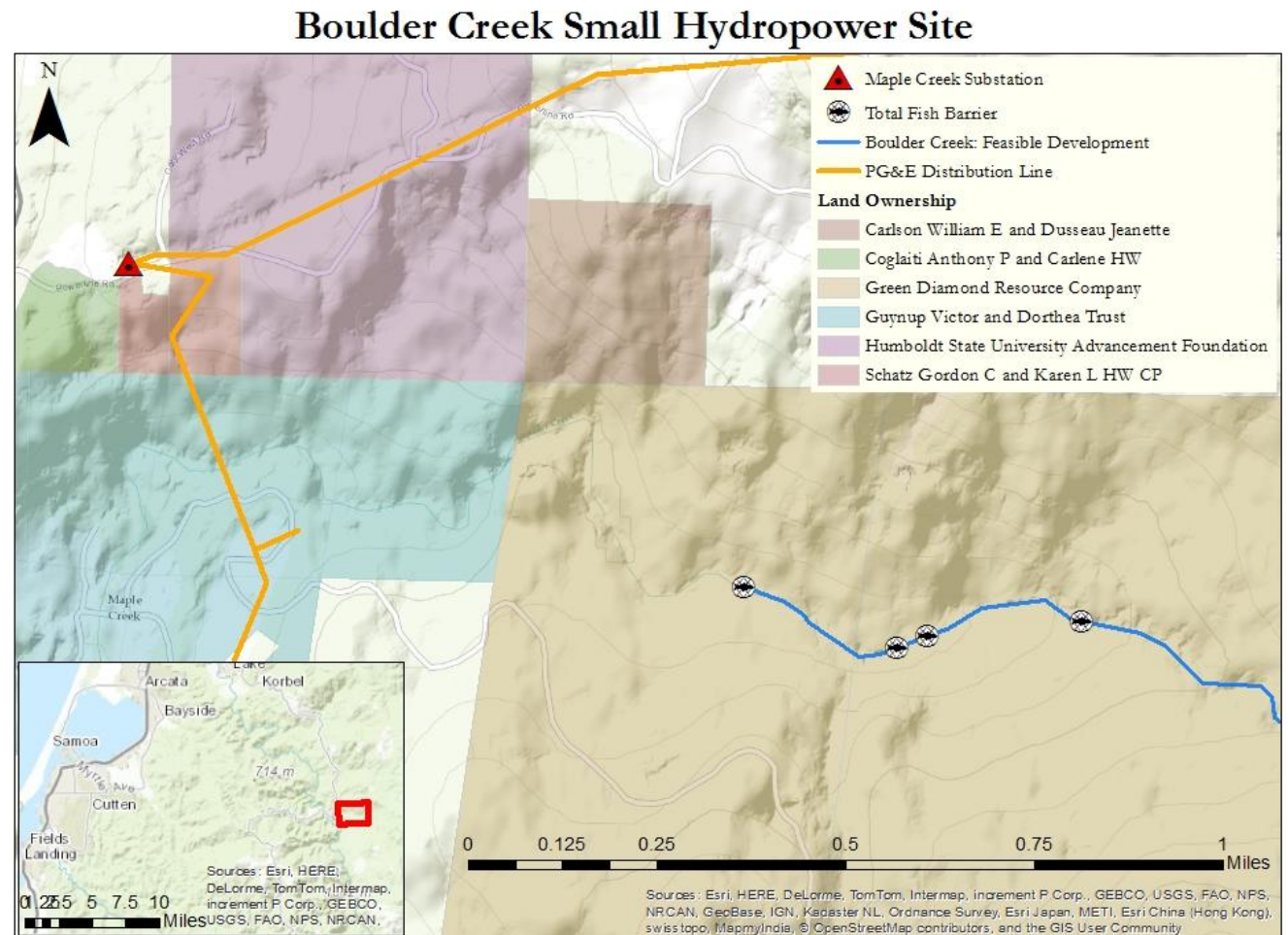
Environmental Science

- Math
 - Calculus
 - Statistics
- Natural Resources
 - Oceanography
 - Climate Science
 - Wildlife
- Science
 - Physics
 - Thermodynamics
 - Energy & Technology
 - Appropriate Technology

Senior Capstone

- Mass representation of all subjects learned in major classes
- Small hydropower feasibility study for the county
- Worked with Cascade Hydro CEO Todd Thorner

Right: One of many deliverables from Capstone



Humboldt Co_Larson Hydro Projects												
File Edit View Insert Format Data Tools Help All changes saved in Drive												
fx Creek Name												
	A	B	C	D	E	F	G	H	I	J	K	L
1	Creek Name	Site Generation (MW)	Feeder Sub	Remaining Sub Bank Capacity (MW)	Remaining Line Capacity (MW)	Anadromous fish present	Looped v. radial	Site to line distance (mi)	Line to substation distance(mile)	Approx. Coordinates (decimal degrees)	Landowner in Larsen study	Comments
2	Aikens Creek	0.255	HOOPA 1101	0.95	2.32	Possibly with location change	radial	0.3	15	41.23002, -123.66493	SRNF	Fish Barrier: Partial(during low flow) and unknowns upstream
3	Ammon Creek	0.4	WILLOW CRK 1103	1.49	4.66	Possibly	radial	0.75	10	40.83475, -123.57755	SRNF	Total natural barrier (boulder falls)around project site. May be located 1300' more upstream than noted.
4	Bear Creek	1.45	RIDGE CABIN	?	?	Possibly	looped t-line	0.7	2.5	40.70363, -123.58152	SRNF	Fish Passage: Total natural barrier Notes: 10-15ft high. Surveyed date: 7/82. Probable barrier to salmon, possible high flow passage during some years.
5	Boise Creek	2.6	HOOPA 1101	0.95	2.32	Yes	radial	0.5	22	41.27379, -123.57234	SRNF	
6	Boulder Creek	8.17	MAPLE CREEK 1101	0.88	Direct Sub Connection	NO	looped t-line	0.5	1.5	40.76151, -123.85091	ARCO	
7	Bull Creek	2.1	HOOPA 1101	0.95	2.32	Yes	radial	0.75	9	41.16830, -123.67707	SRNF	
8	Campbell Creek	1.5	WILLOW CRK 1103	1.49	3.99	Yes	radial (close to t-line)	0.2	3.5	41.01341, -123.65412	SRNF, t-line BIA	
9	Cannon Creek	0.7	BLUE LAKE 1101	7.76	9.4	Yes	radial	3.2	5	40.83465, -123.92086	Private, Simpson, E., M Freeman	
10	China & Camp Creeks	4.8	HOOPA 1101	0.95	2.32	Yes	radial	5.5	35	41.35795, -123.62217	SRNF	
11	Grouse Creek (downstre	2.4	RIDGE CABIN	?	?	Possibly	looped t-line	1.6	3	40.7000025, -123.6551608	SRNF, Champion int	Fish Passage: Total natural barrier Notes: 10-15ft high. Surveyed date: 7/82. Probable barrier to salmon, possible high flow passage during some years.
12	Horse Linto Creek (midd	3	WILLOW CRK 1103	1.49	3.99	Possibly with location change	radial	7.5	12	40.99706, -123.48748	SRNF	Fish passage: unknown 50ft falls 1.25 miles upstream from mapped location
13	Hostler Creek (downstre	1.25	HOOPA 1101	0.95	2.32	Possibly	radial	1	3.5	41.08057, -123.65354	BIA	Fish Passage: Unknown Passage (20ft falls). Actual project location probably upstream of mapped location (and possible barrier)
14	Jacoby Creek	0.4	ARCATA 1122	9	2.53	NO	radial	0.16	6	40.79908, -124.01779	Private, city of Arcata	Too small
15	Madden Creek	2	WILLOW CRK 1103	1.49	4.66	NO with location change	radial	0.47	5.25	40.87925, -123.61932	SRNF, Gleason W	Actual fish passage barrier on Old Cambell Creek, not Madden
16	Maple Creek	0.75	MAPLE CREEK 1101	0.88	1.06	Possibly	radial	6.5	10	40.80067, -123.84573	Simpson, J. Salisbury, L. Pawlus	Too far from distribution line for too small of a project
17	Mawah Creek	0.35	HOOPA 1101	0.95	2.32	Possibly	radial	0.1	18	41.2718555, -123.7836168	Dr. Merrill	Fish Passage: Unknown (steep)
18	Mingo Creek	0.5	WILLOW CRK 1103	1.49	4.66	Yes	radial	1.75	13.5	40.78402, -123.57626	SRNF	
19	Pearch Creek	0.5	HOOPA 1101	0.95	2.32	Possibly	radial	0.13	24.5	41.30864, -123.51514	SRNF, TP Jordan	Fish passage: Unknown falls
20	Pine Creek	4.56	HOOPA 1101	0.95	2.32	Yes	radial	0.96	13	41.18963, -123.76002	(BIA)	
21	Slide Creek	3.35	ORICK 1101	3.46	2.9	Possibly	radial	15	20.5	41.44674, -123.81903	SRNF, cross county line to Del Norte	Fish Passage: Partial barrier Notes: Steep boulder cascade, with falls drops 6-7 ft, possible hindrance to fish passage - need further investigation to assess extent and any treatment options.
22	Soctish Creek	1.6	HOOPA 1101	0.95	2.32	Yes	radial	0.89	3.5	41.08540, -123.72905	BIA	

The Future

*“To learn more about careers in energy,
and further delve into the world of
renewable energy technology”*